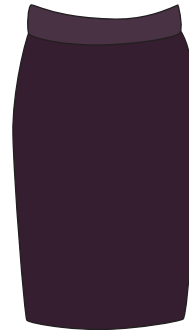
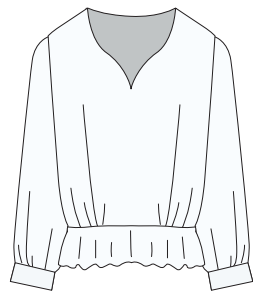
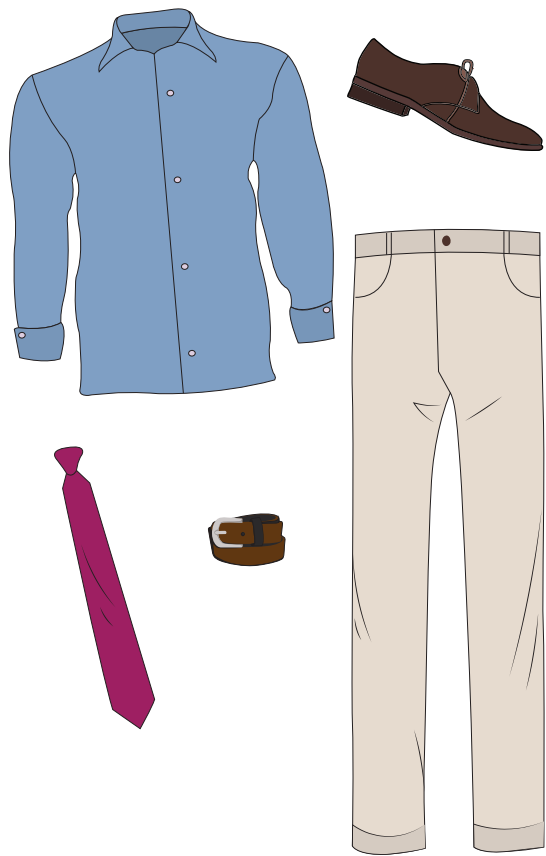


BUSINESS CASUAL vs. BUSINESS PROFESSIONAL



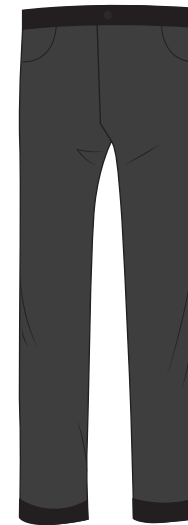
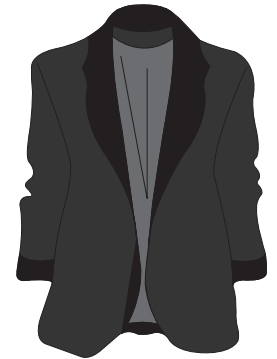
BUSINESS CASUAL

- Collared, button down shirts
- Blouses or shirts with a high cut
- Sweaters or cardigans
- Khaki or dark pants with a belt
- Skirts or dresses that fall below

- the fingertips
- Loafers or dress shoes that cover all or most of the foot
- Sport coat (optional)
- Tie (optional)

NOT BUSINESS CASUAL

- Matching suit
- Flip flops or sandals
- Gym/athletic attire
- Jeans
- Shorts



BUSINESS FORMAL

- Collared, button down shirts tucked in
- Blouses or shirts with a conservative cut
- Sweaters or cardigans
- Khaki or dark pants with a belt
- Skirts or dresses that fall below the fingertips